

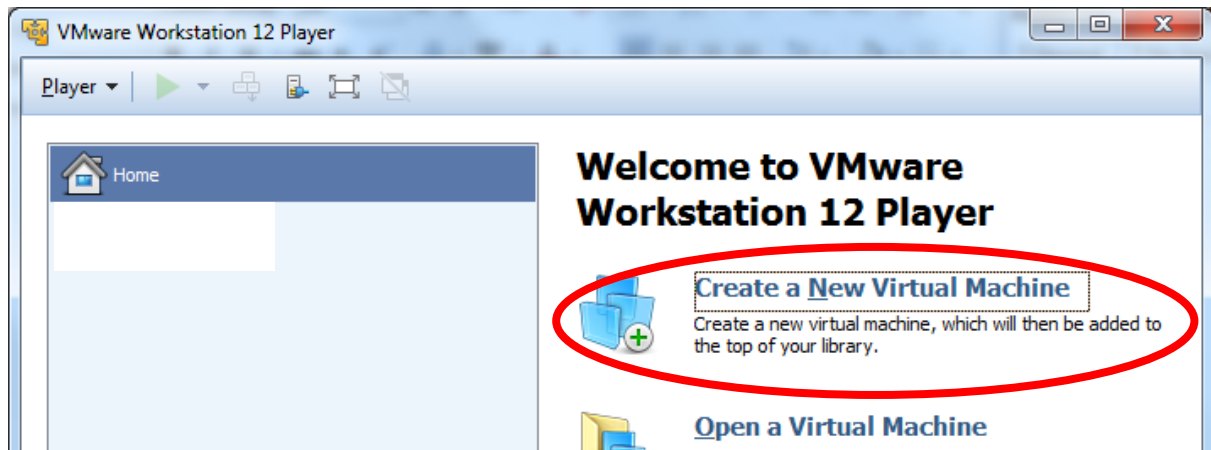
VMWare virtual machine creation tutorial

Create a Virtual machine through VMWare Player using a virtual disk downloaded from osboxes.org (Ubuntu 16.04, 64 bits)

Create the Virtual Machine

1. Launch Virtual Machine creation procedure

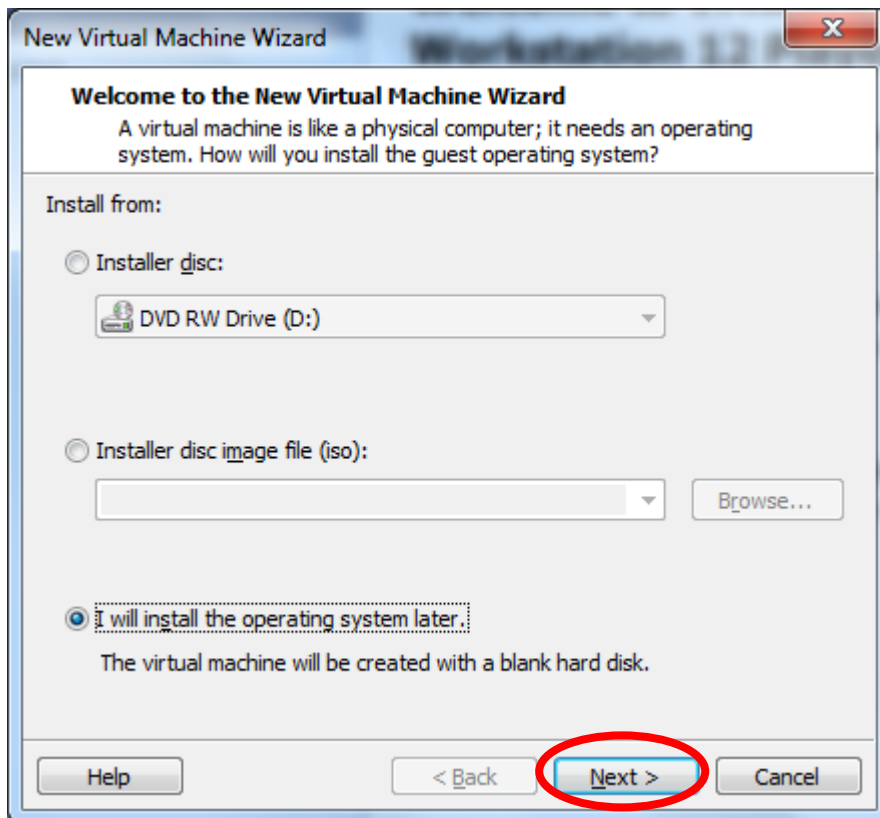
Open VMWare Player and start procedure



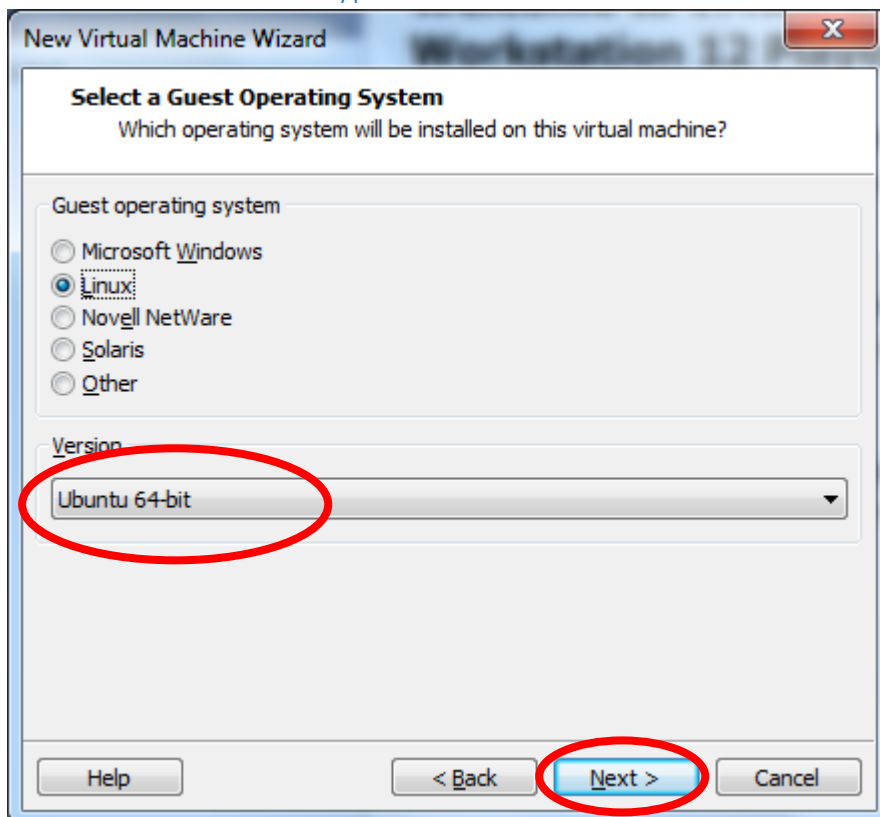
Create a virgin virtual machine

With VMWare Player we cannot create a virtual machine with an external virtual disk (ie the one just downloaded from osboxes.org). We must create the virtual machine and add the osboxes virtual disk in a second step.

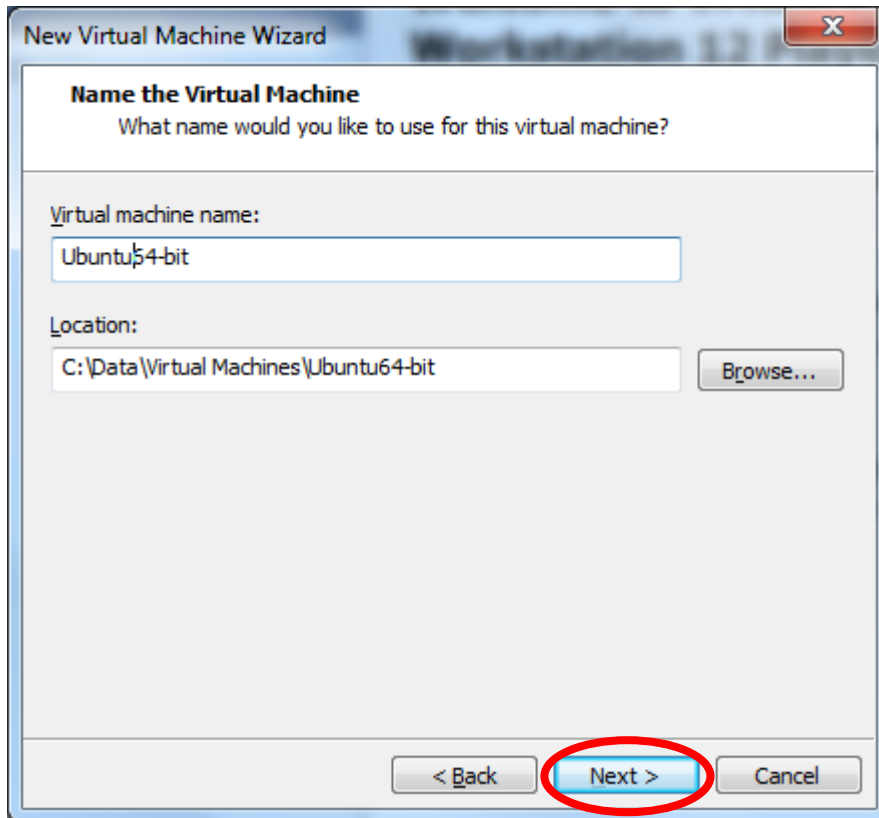
So first creating a virtual machine with a virgin virtual disk. This disk will be deleted later once the virtual disk of osboxes added to the virtual machine.



Set Virtual machine os type



Select Virtual machine destination location



Name the Virtual Machine
What name would you like to use for this virtual machine?

Virtual machine name:
Ubuntu64-bit

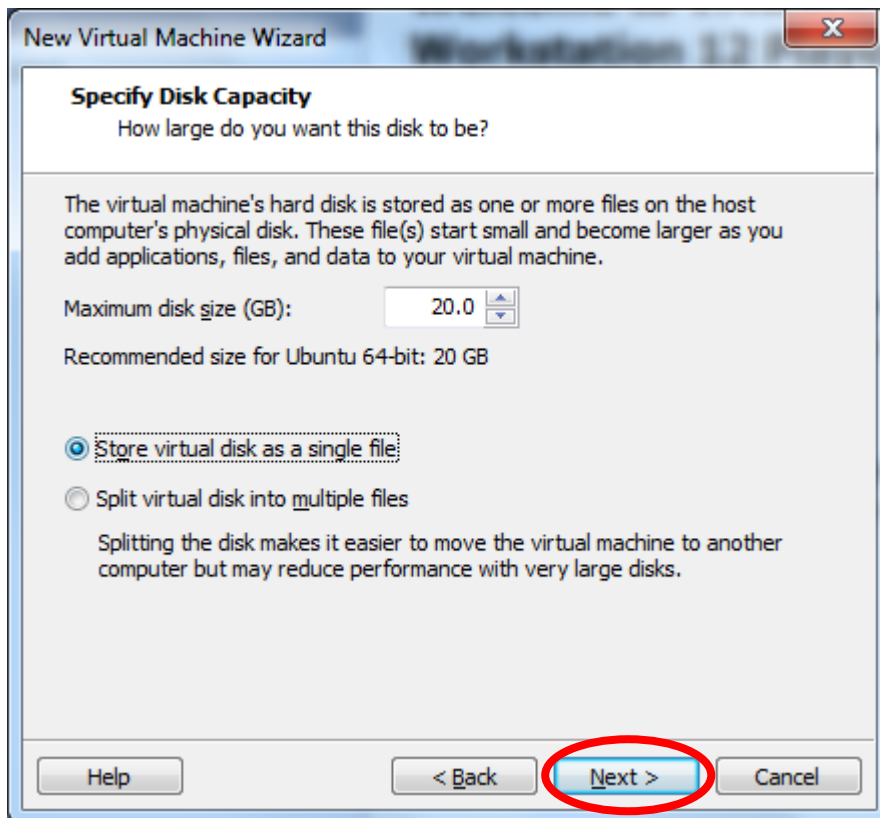
Location:
C:\Data\Virtual Machines\Ubuntu64-bit

< Back **Next >** Cancel

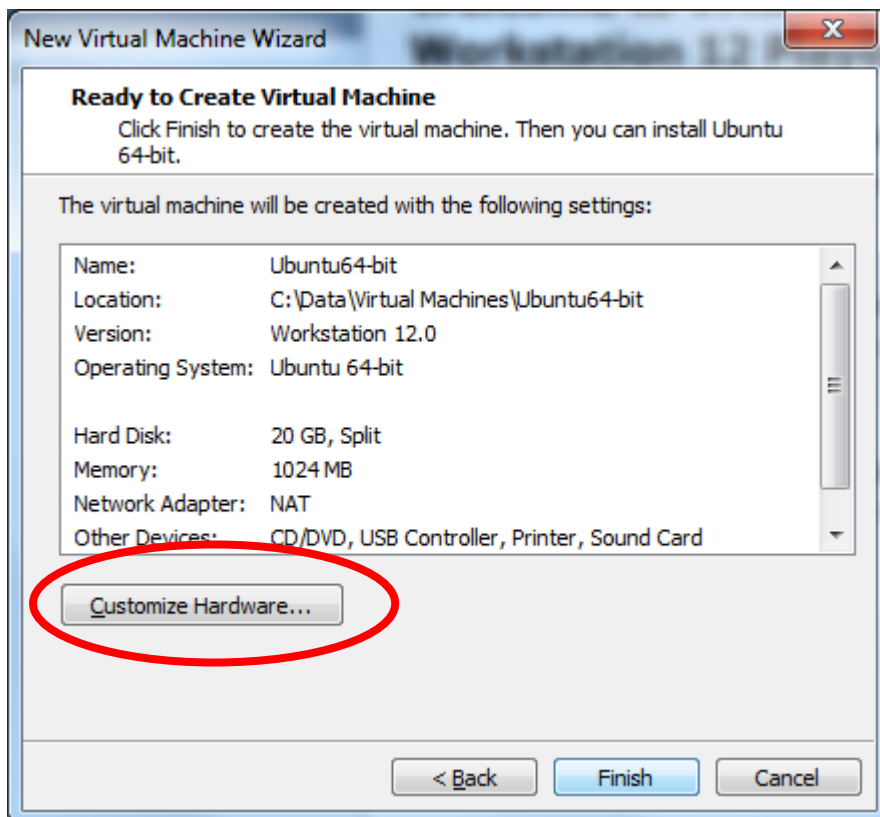
Set virtual disk type

This settings doesn't matter since this default virtual disk will be deleted.

Only the virtual machine the osboxes virtual disk will be keep.



Customize hardware of the virtual machine

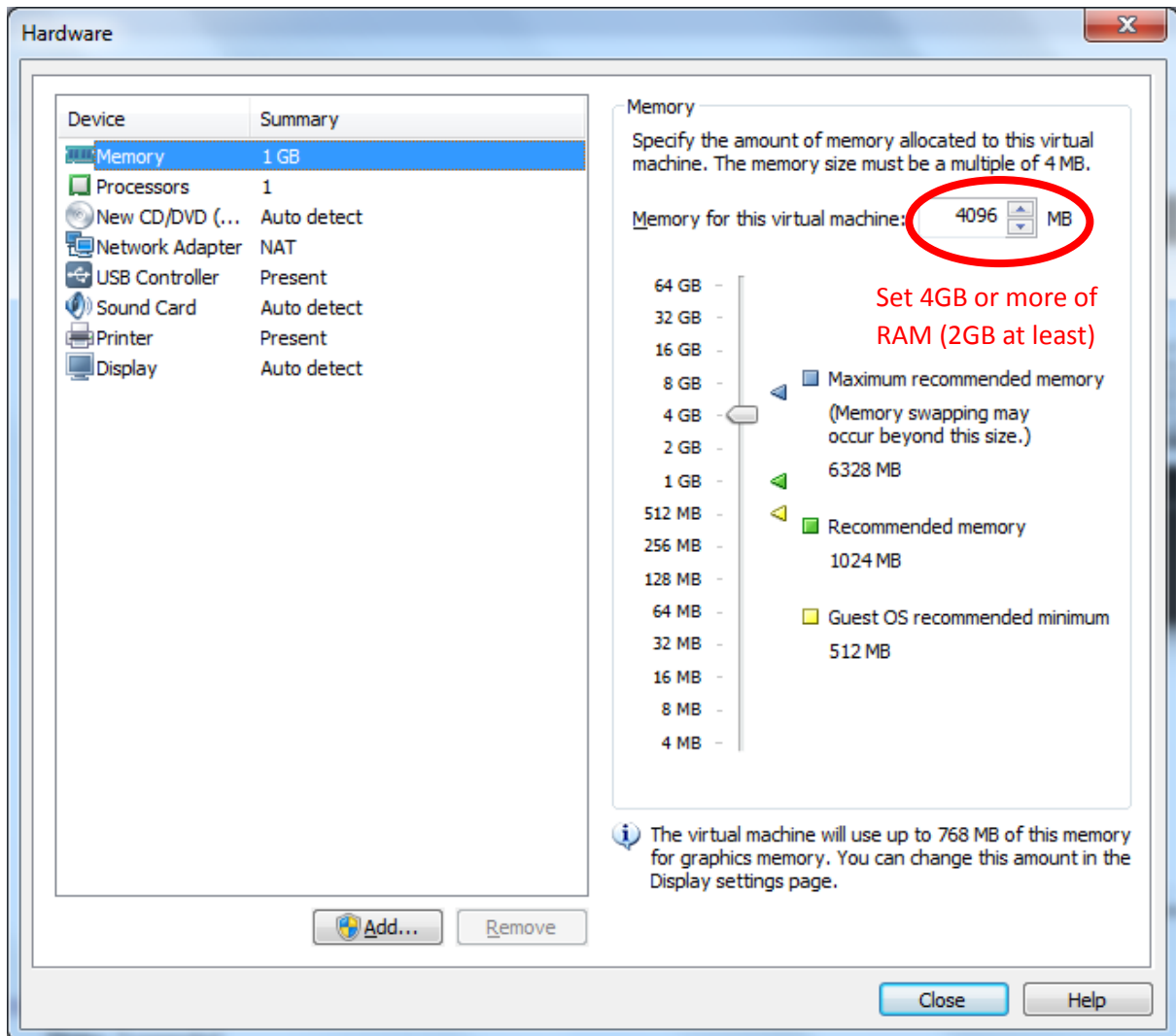


Set RAM of the virtual machine

4GB or more is a good settings however keep in mind you need to left RAM for Windows (1GB or 2GB for windows should be enough)

More RAM are allocated for Virtual Machine faster Ubuntu and compilation will run.

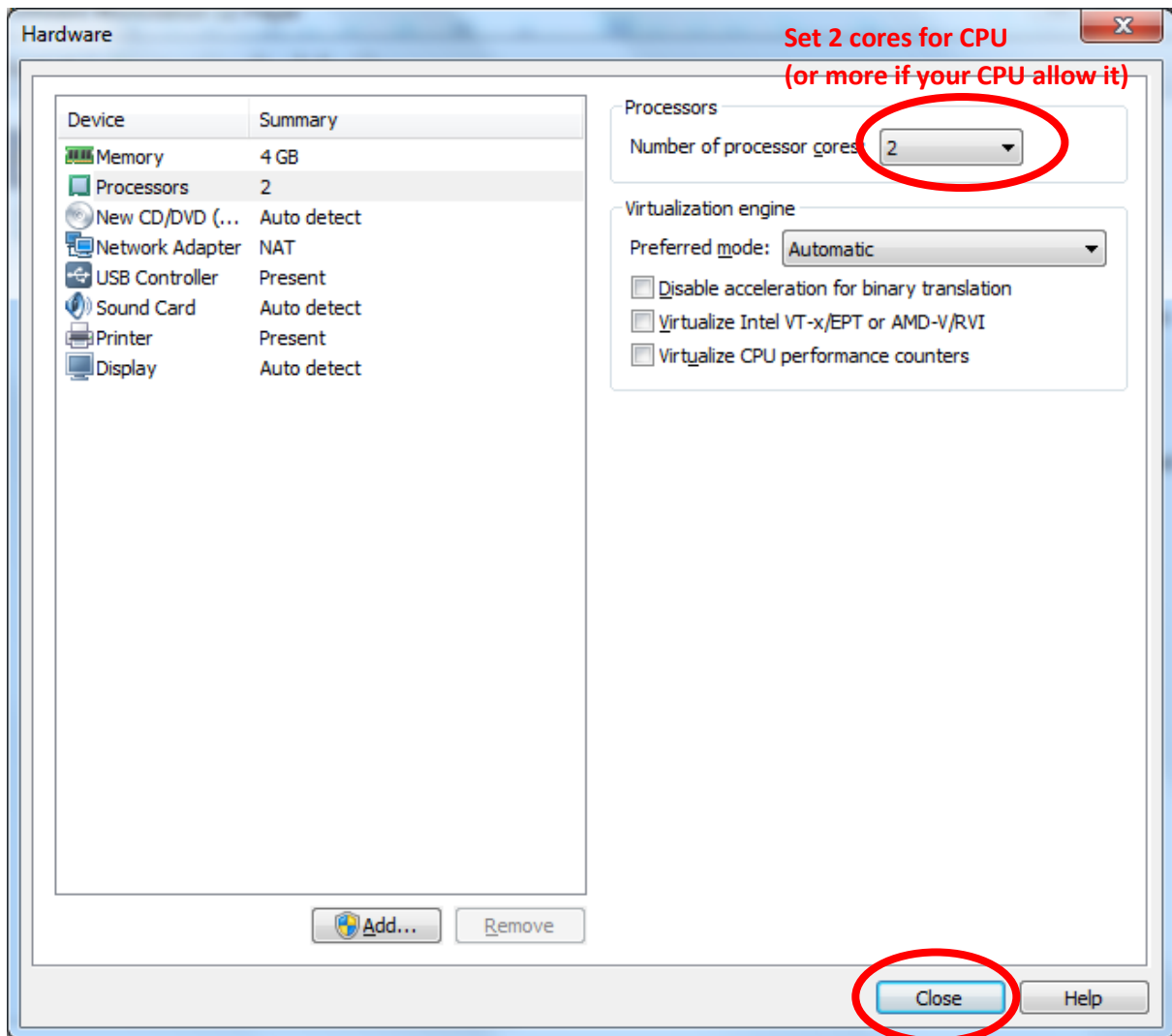
Please set at least 2GB especially if you need to do compilation inside your virtual machine.



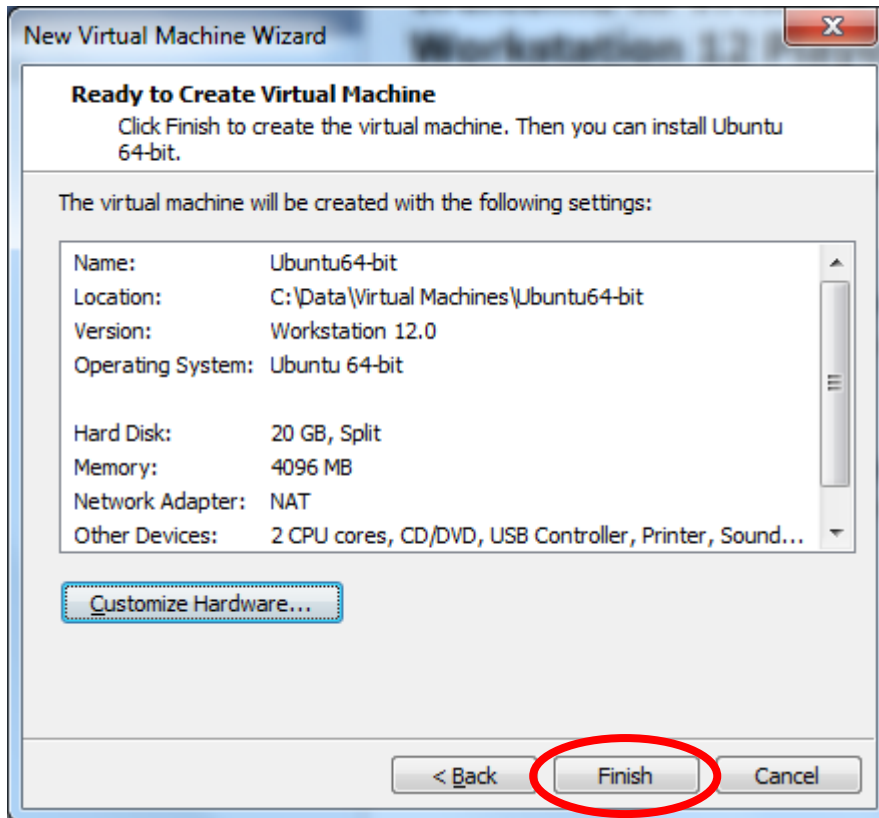
Set number of cores of the virtual machine

Please set has many core the host CPU has.

More cores are set faster compilation will run.



Verify and finish the virtual machine creation

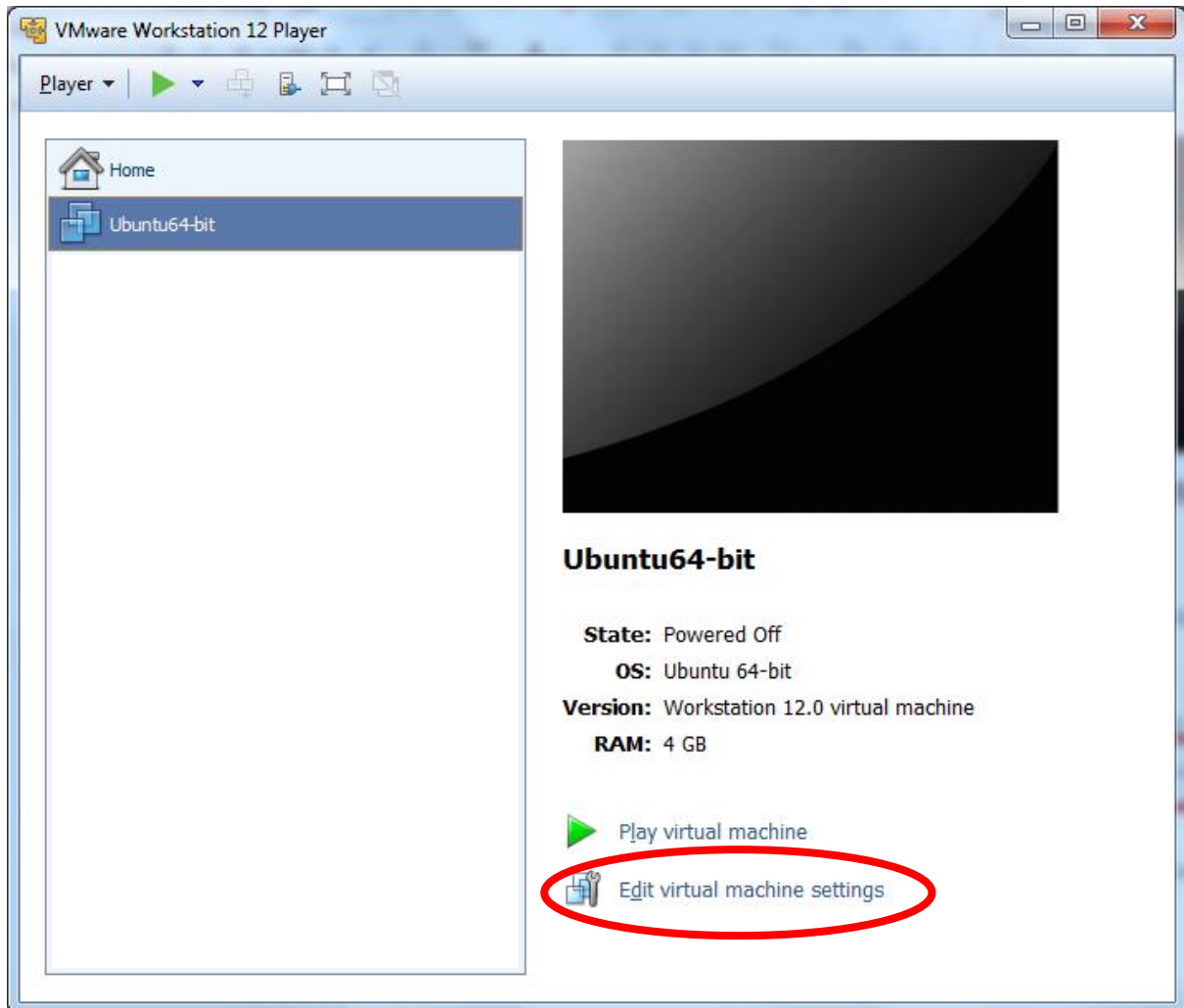


Adding the virtual disk of osboxes.org

Copy the virtual disk of osboxes

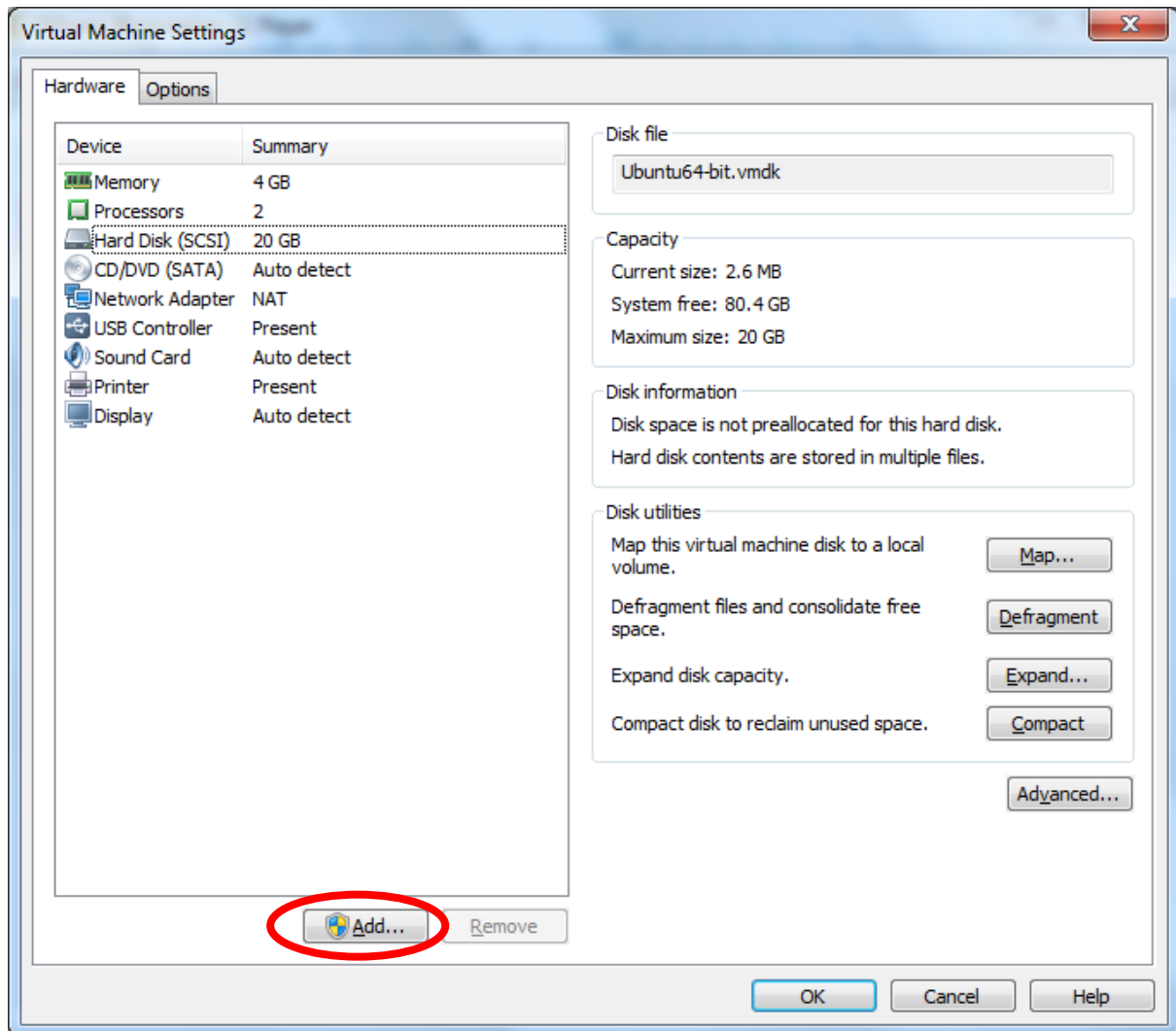
Copy the virtual disk just downloaded from osboxes.org to the location of the just created virtual machine (see Location field in the previous screenshot)

Edit the virtual machine

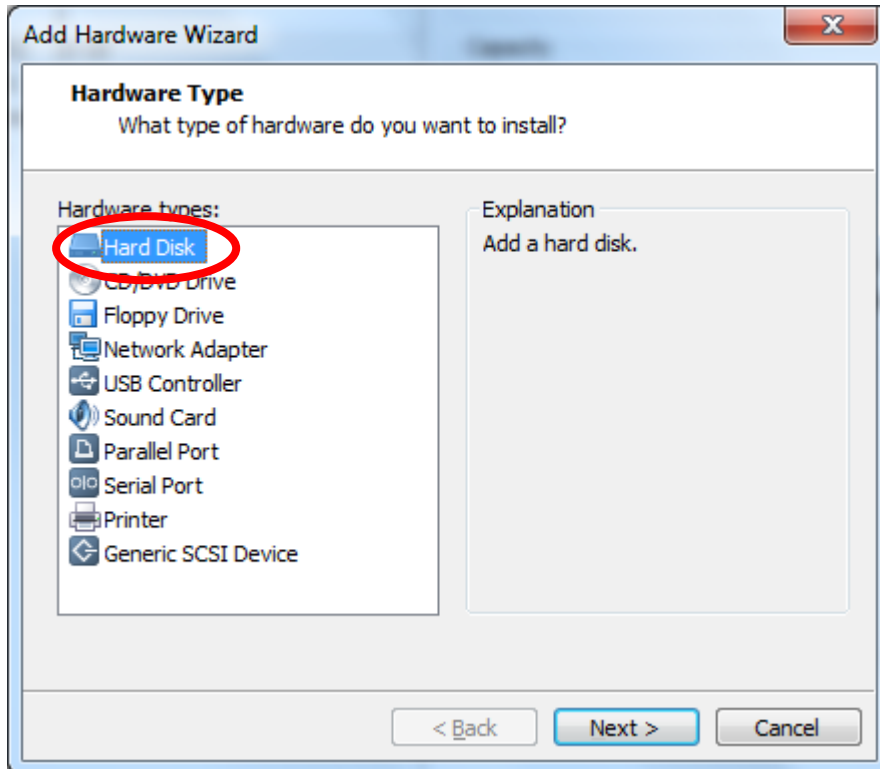


Add the osboxes virtual disk

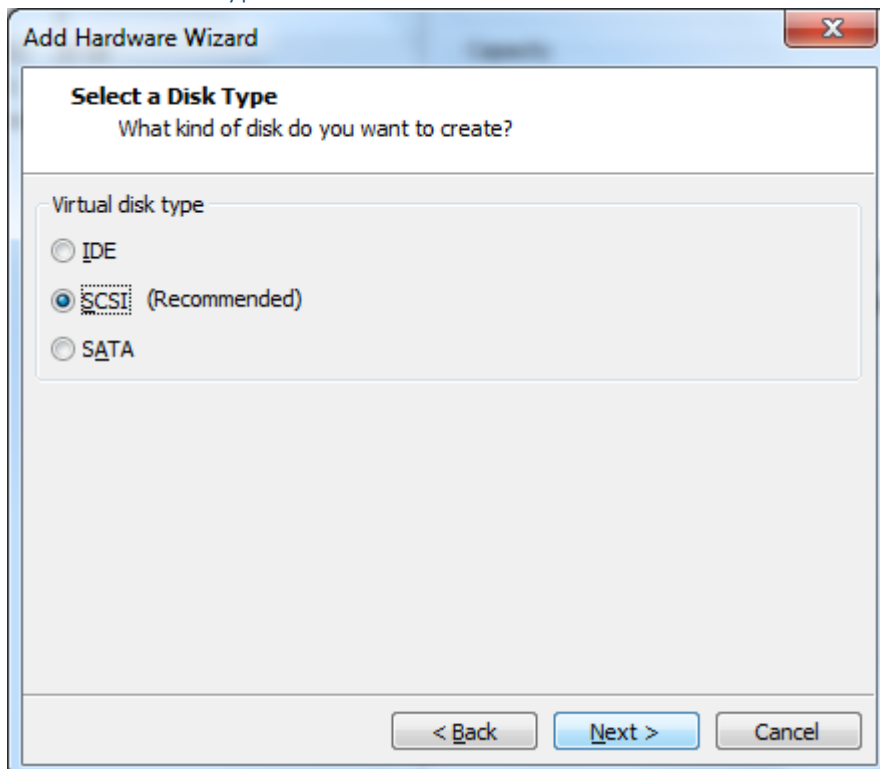
Click on add hardware button



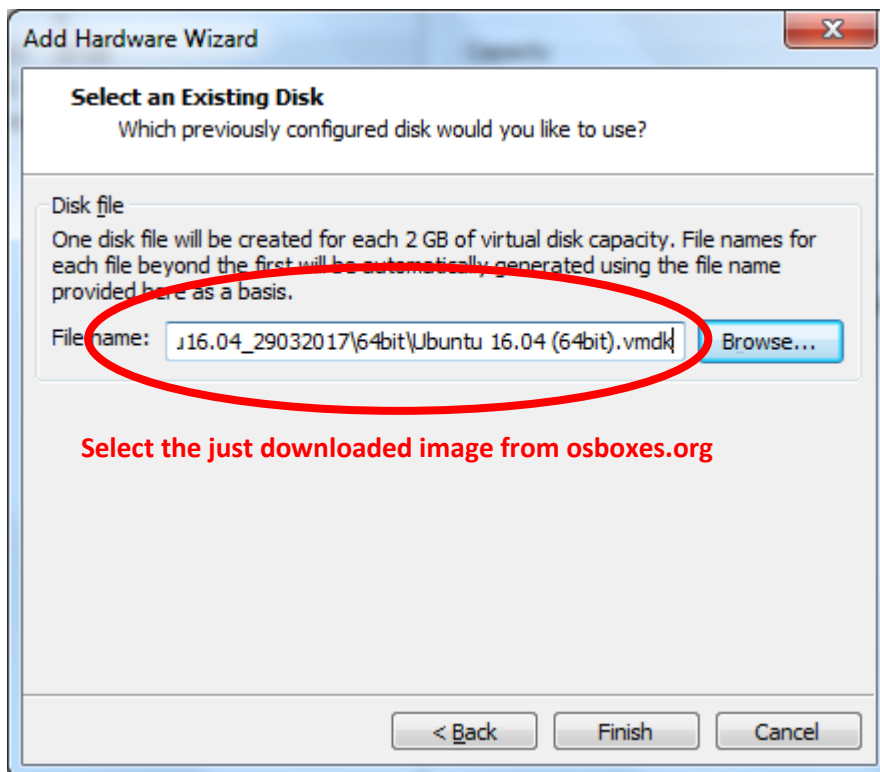
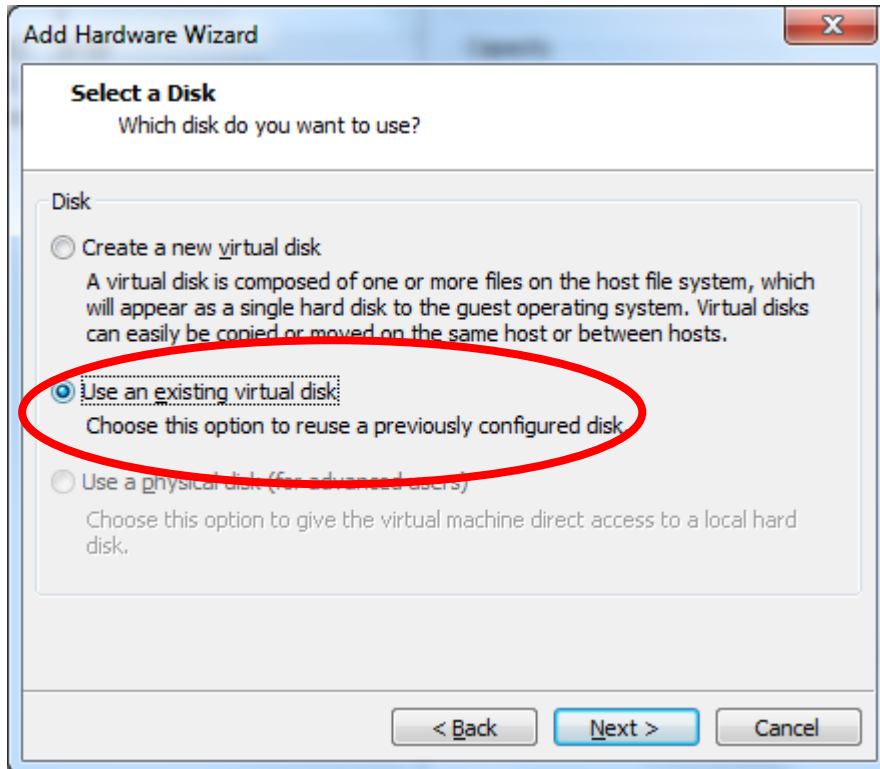
Select Hard disk



Select hard disk type

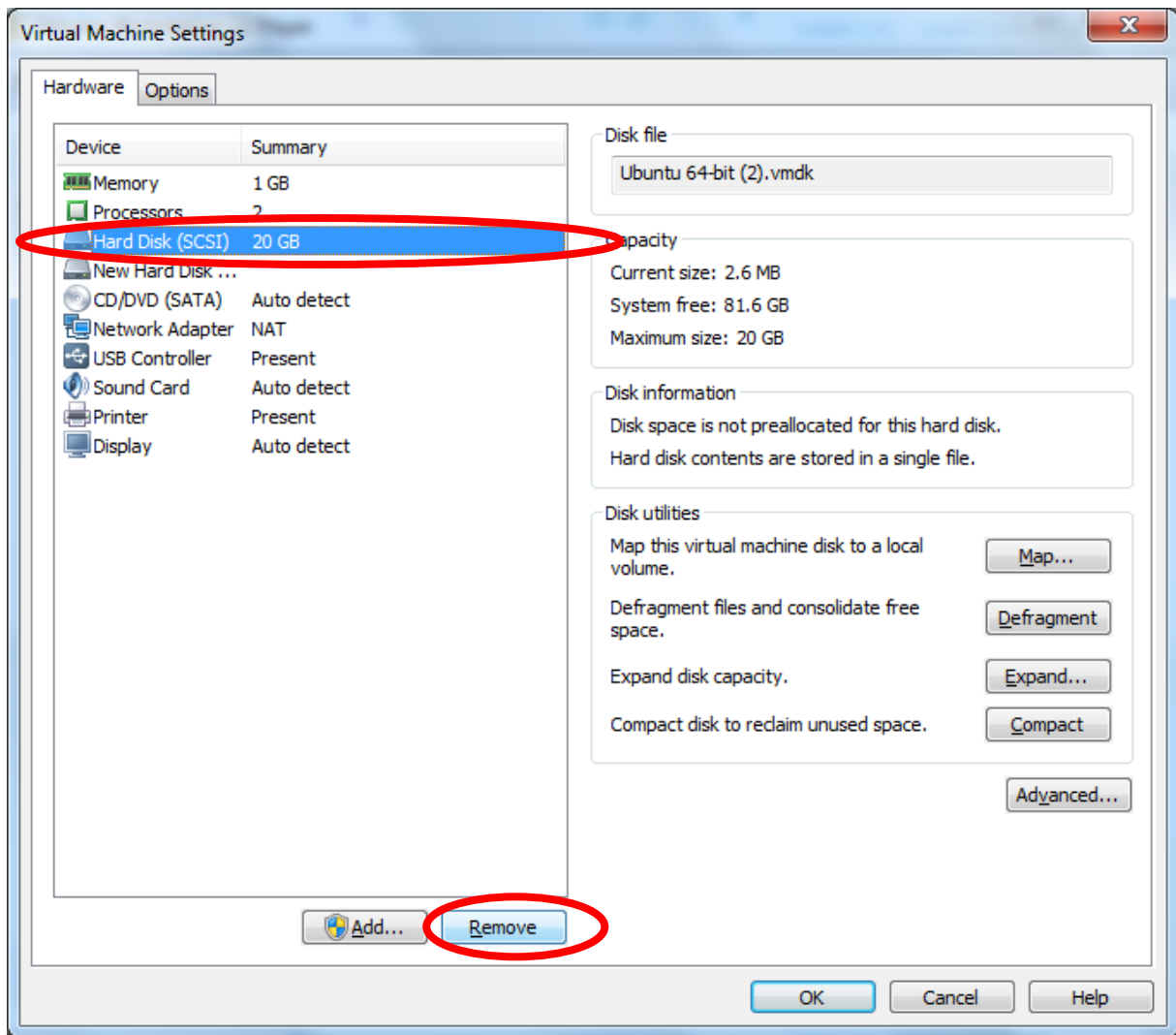


Add the osboxes virtual hard disk



Remove default virtual disk

Since the virtual disk of osboxes have been added to the virtual machine, we do need anymore the virtual disk added at virtual machine creation.



set osboxes virtual disk as master

By adding the virtual disk of osboxes in a second step then the virtual disk has been set as slave. The master disk is the default disk created at virtual machine creation.

Since the default disk have been deleted (just before), the virtual machine doesn't have anymore master disk.

So the osboxes disk should be set as master.

